



Commercial UAV Drone Inspection Services



(SAMPLE) RAPID AUDIT CELL TOWER REPORT



ABC Company, Inc. Cell Tower (EXAMPLE) RAPID AUDIT Inspection Report

<p><u>Site Address:</u> WWWV TV-65 1234 Any Street Hometown, YS 12345</p> <p><u>Tower Information:</u> Tower Manufacturer: Dressor Ideco Tower structure height: xxx.x' Guyed Antenna top height: xxx' Year of manufacture: 1970 Tower Finish: Galvanized</p>	<p><u>GPS Location:</u> Latitude: N 00° 00' 00" Longitude: W 000° 00' 00"</p> <p>FCC registration number: 12341234</p> <p><u>Point of Contact:</u> Frank Segarra Office: (800) 874-9640 Cell: (973) 769-3490</p>
---	--

Date	Project No.	Operator	Operator	Analyst	Revision No.
3/1/2018	12345 ABC Co.	FS	FS	FS	

Client Name ABC Company	Project Number 12345	Inspection Type Cell Tower Analysis	ABC Company Inc.
----------------------------	-------------------------	--	-------------------------

Example Project Overview

ABC Company requested the services of ConnexiCore, LLC for inspection purposes of tower XXX located off of 1234 Any Street Hometown, YS 12345. The inspection process consists of the use of Unmanned Aerial Vehicles (UAVs) to assess the existing antennas and transceivers on the cellular tower.

Equipment Required

Aircraft(s): DJI P4P Sensor(s):

FoxTech V4 RGB

Location



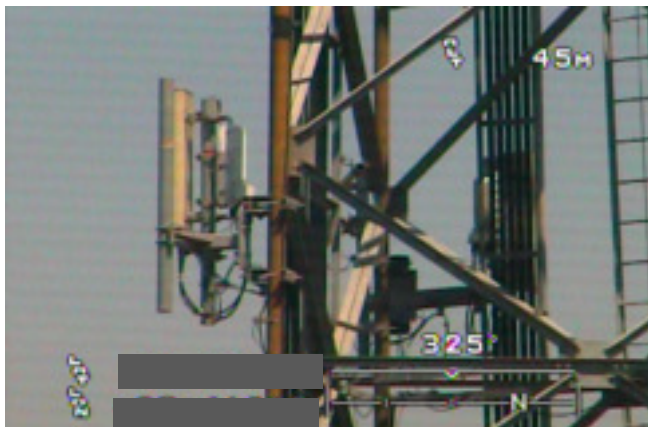
Client Name ABC Company	Project Number 12345	Inspection Type Cell Tower Analysis – 45m	ABC Company Inc.
----------------------------	-------------------------	--	-------------------------

The cell tower has three (3) levels of antennas that were observed and inspected. The three levels are categorized in accordance to their altitude on the tower. The three levels are 45 meters, 65 meters, and 85 meters.

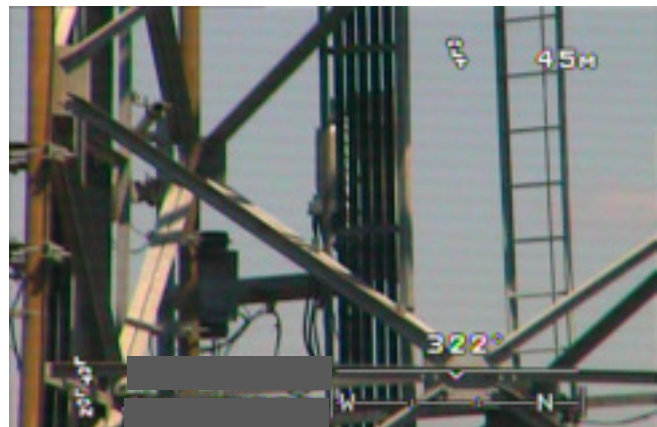
45 Meters



45 Meter Level Overview



Antenna Inspection



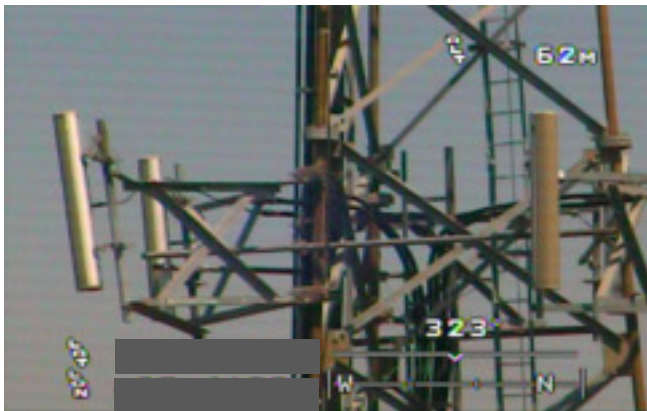
Interior Cabling Inspection

Client Name ABC Company	Project Number 12345	Inspection Type Cell Tower Analysis – 65m	ABC Company Inc.
----------------------------	-------------------------	--	-------------------------

65 Meters



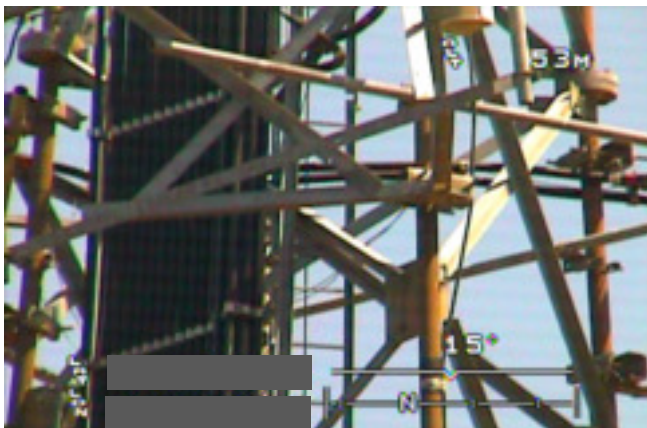
65 Meter Level Overview



Antenna Inspection



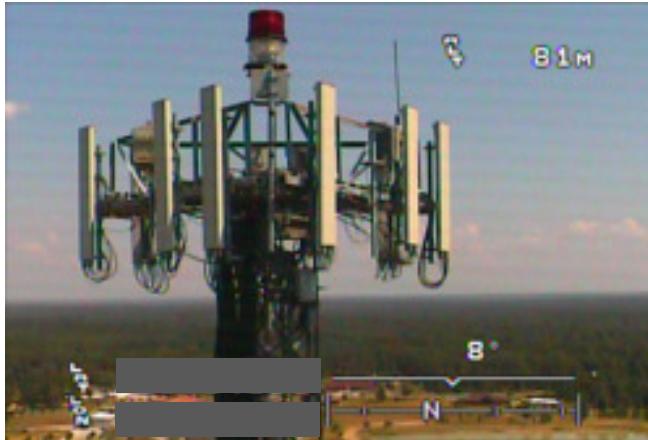
Antenna Inspection



Interior Cabling Inspection

Client Name ABC Company	Project Number 12345	Inspection Type Cell Tower Analysis – 85m	ABC Company Inc.
----------------------------	-------------------------	--	-------------------------

85 Meters



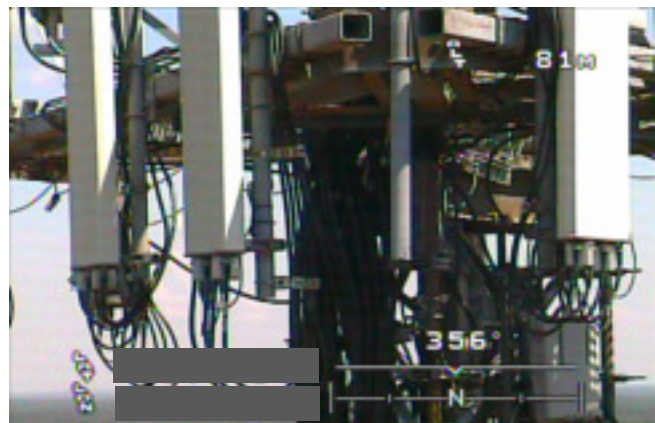
85 Meter Level Overview



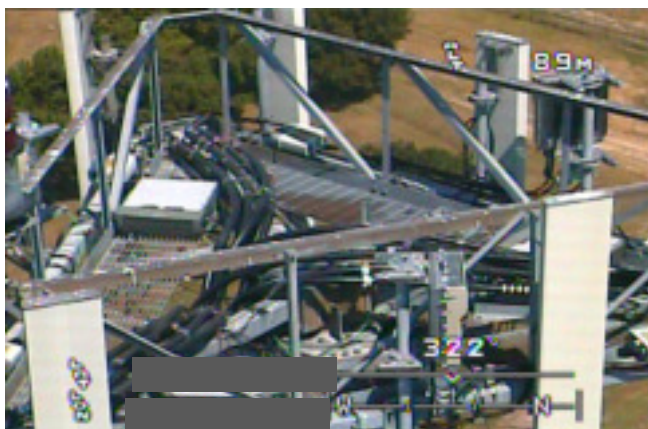
85 Meter Level Overview



Antenna Inspection



Antenna Cabling Inspection



Top Platform Equipment Inspection



Top Platform Equipment Inspection

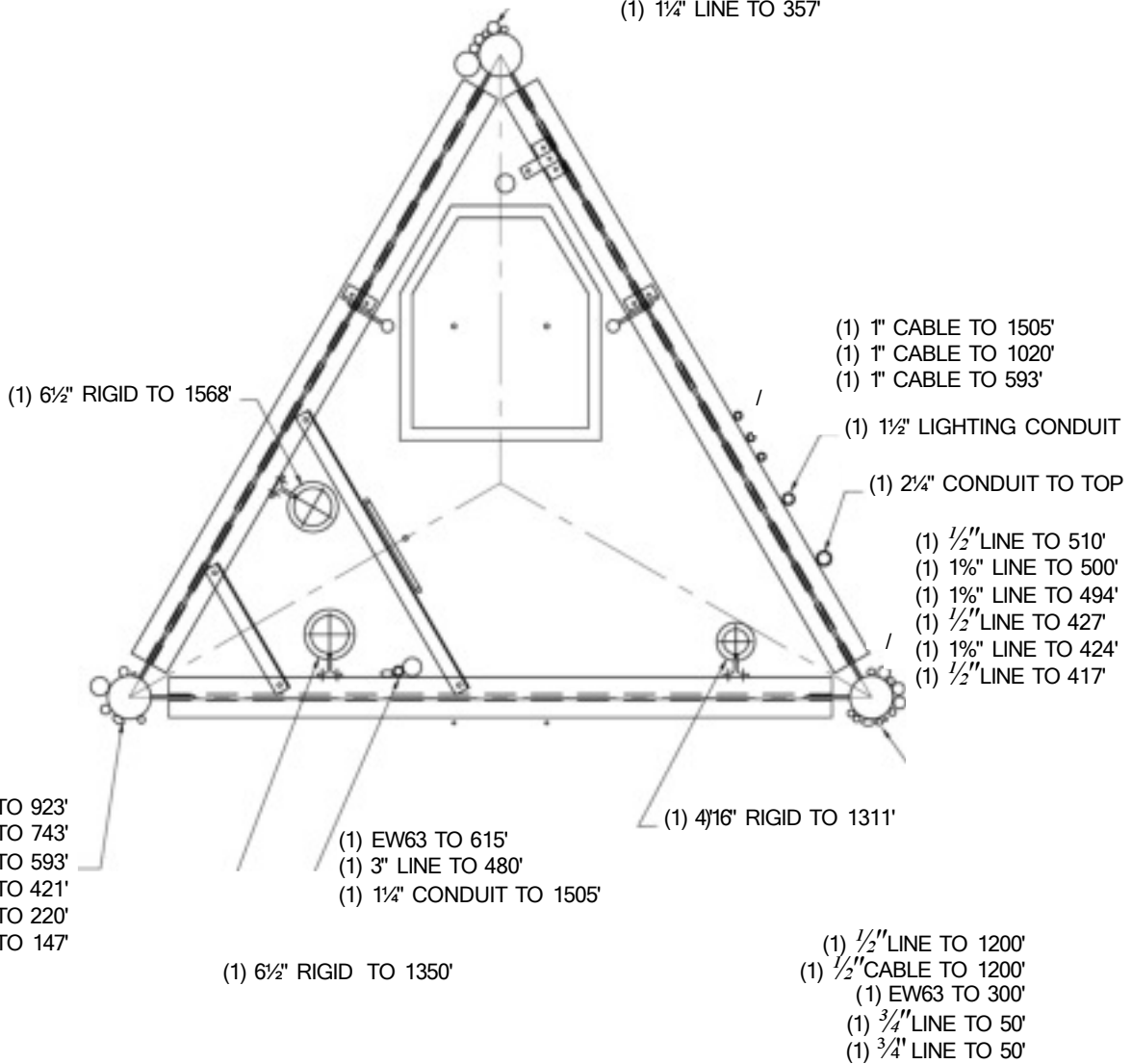
Client Name ABC Company	Project Number 12345	Inspection Type Cell Tower Analysis – 85m	ABC Company Inc.
----------------------------	-------------------------	--	-------------------------

OBSERVATIONS AND MEASUREMENTS

- A. Tower Members:** The tower members appear satisfactory.
- B. Connections:** All tower connections appear satisfactory.
- C. Ladder and Safety Device:** The ladder and Tylon safety rail system are in satisfactory condition.
- D. Guys and Guy Hardware:** The guys and guy hardware are in satisfactory condition. See Table for accompanying hardware components.
- E. Foundations:** Visible portions of the foundations appear satisfactory.
- F. Antennas and Antenna Mountings:** The antennas and mountings are in satisfactory condition. See Table for list of antennas on this structure.
- G. Transmission Lines:**
1. There are several loose 1/4" transmission lines throughout the length of the tower. This is tolerable.
 2. There is a loose relay box in the second cluster of antennas. See Photo #X.
- H. Waveguide Bridge:** 3. There is a loose transmission line splitter connection. See Photo #X. The waveguide bridge and port into the building are in satisfactory condition. See Photos #X and #X.
- I. Grounding:** The grounding is satisfactory.
- J. Conduit and Lighting:** The DOL on face 3-1 at 142' and beacon at the top of the tower are in satisfactory condition.
- K. Paint:** The paint is in excellent condition and approximately 90% effective. The tower galvanizing appears satisfactory.
- L. Galvanizing:**
- M. Guy Tensions:** The guy tensions are mainly within recommended CSA limits. See Table X
- N. Tower Alignment:** The tower alignment is satisfactory. See Table X.
- O. Additional Remarks:**
1. There is no security fence or anti-climb system in place to restrict unauthorized personnel from accessing this structure.
 2. There are numerous unused yagis and dipole antennas lying behind the building. See Photo #X.



- (1) 4" LINE TO 919'
- (1) 1 1/2" LINE TO 713'
- (1) 1 1/4" LINE TO 473'
- (1) 1/2" LINE TO 447'
- (1) 1/2" LINE TO 434'
- (1) 1/4" LINE TO 357'



- (1) 1" CABLE TO 1505'
- (1) 1" CABLE TO 1020'
- (1) 1" CABLE TO 593'

- (1) 1 1/2" LIGHTING CONDUIT
- (1) 2 1/4" CONDUIT TO TOP

- (1) 1/2" LINE TO 510'
- (1) 1 1/8" LINE TO 500'
- (1) 1 1/8" LINE TO 494'
- (1) 1/2" LINE TO 427'
- (1) 1 1/8" LINE TO 424'
- (1) 1/2" LINE TO 417'

- (1) 3" LINE TO 923'
- (1) EW63 TO 743'
- (1) 1 1/4" LINE TO 593'
- (1) 1/2" LINE TO 421'
- (1) 1 1/4" LINE TO 220'
- (1) 1/2" LINE TO 147'

- (1) EW63 TO 615'
- (1) 3" LINE TO 480'
- (1) 1 1/4" CONDUIT TO 1505'

- (1) 4 1/16" RIGID TO 1311'

- (1) 6 1/2" RIGID TO 1350'

- (1) 1/2" LINE TO 1200'
- (1) 1/2" CABLE TO 1200'
- (1) EW63 TO 300'
- (1) 3/4" LINE TO 50'
- (1) 3/4" LINE TO 50'